



# Designer Collection

Cocktail / Mirri Card / Mirri Sparkle / Mirri Boards / Sirio Pearl / Pearlescents  
Sirio Ultra Black / Color Uncoated / Translucent

Version 1.0 | May 20, 2022



# Cocktail

Pearlescent Metallic Papers

## Italian designer papers with a shimmering pearl sheen and a subtle, textured surface



This collection from the renowned Italian Fabriano mill comes in 12 intense shades named after mouth-watering drinks. Cocktail papers are not only intoxicating to look at, but are also enticing with a rich, tactile surface. The coating with tiny mica particles gives an appealing pearlescent sheen to the paper.

### Certifications

- ▶ FSC®

### Specifications

- ▶ Made in Italy
- ▶ Acid-free
- ▶ Pearlescent finish on both sides
- ▶ Made with EFC pulp
- ▶ Light fast colour

### Press

- ▶ Digital
- ▶ Offset/Litho
- ▶ Screen Printing

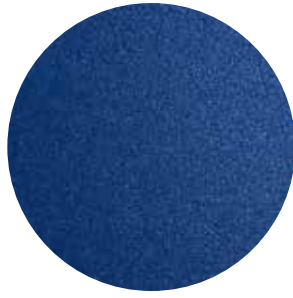
### Finishing

- ▶ Letterpress

## Colours



Black Russian



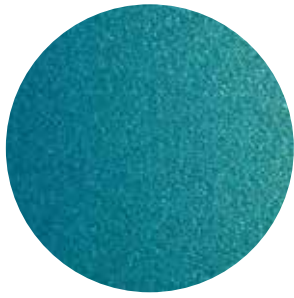
Blue Angel



Blue Moon



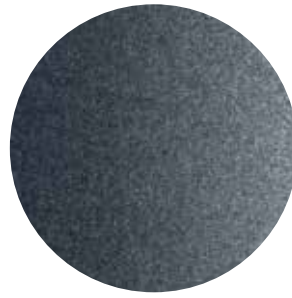
Cuba Libre



Curaçao



Daiquiri



Dorian Grey



Mai Tai



Mojito



Purple Rain



Gin Fizz



White Lady

## Available Weights & Sizes

# Litho

Also available in 13 x 19" Digital sheet sizes.

| Stock         | Calpier | GSM |                  | Size         | Shts / Ctn |
|---------------|---------|-----|------------------|--------------|------------|
| Black Russian | 14pt    | 290 | F06-CTL290BR2739 | 27.5 x 39.37 | 100        |
| Blue Angel    | 14pt    | 290 | F06-CTL290BA2739 | 27.5 x 39.37 | 100        |
| Blue Moon     | 14pt    | 290 | F06-CTL290BM2739 | 27.5 x 39.37 | 100        |
| Cuba Libre    | 14pt    | 290 | F06-CTL290CL2739 | 27.5 x 39.37 | 100        |
| Curaçao       | 14pt    | 290 | F06-CTL290CU2739 | 27.5 x 39.37 | 100        |
| Daiquiri      | 14pt    | 290 | F06-CTL290DA2739 | 27.5 x 39.37 | 100        |
| Dorian Grey   | 14pt    | 290 | F06-CTL290DG2739 | 27.5 x 39.37 | 100        |
| Mai Tai       | 14pt    | 290 | F06-CTL290MT2739 | 27.5 x 39.37 | 100        |
| Mojito        | 14pt    | 290 | F06-CTL290MJ2739 | 27.5 x 39.37 | 100        |
| Purple Rain   | 14pt    | 290 | F06-CTL290PU2739 | 27.5 x 39.37 | 100        |
| Gin Fizz      | 14pt    | 290 | F06-CTL290GF2739 | 27.5 x 39.37 | 100        |
| White Lady    | 14pt    | 290 | F06-CTL290WH2739 | 27.5 x 39.37 | 100        |



# Mirri Card

Reflective Metallic Papers

## When it comes to reflective papers engineered to impress look no further than Mirri



Manufactured using an exceptionally high-quality film, the brightness of the metalized surface provides a mirror finish which is further enhanced by the smoothness of the cast-coated board to which it is laminated. With the metalized surface protected by a polyester film, this construction has a high surface energy that offers an excellent key for inks and adhesives.

### Specifications

- ▶ Made in England
- ▶ High-quality film laminated to cast coated board
- ▶ Mirrored Surface

### Press

- ▶ Offset/Litho

### Finishing

- ▶ Foil Stamping
- ▶ Fold and glue friendly

## Colours



Black



Blue



Copper



Emerald



Gold



Gunmetal



Pink



Purple



Red



Rose Gold



Silver

## Available Weights & Sizes

# Litho

| Stock     | Calpier | GSM |                  | Size        | Shts / Ctn |
|-----------|---------|-----|------------------|-------------|------------|
| black     | 12pt    | 270 | C80-MRC270BK2739 | 39.3 x 27.5 | 100        |
| blue      | 12pt    | 270 | C80-MRC270BL2739 | 39.3 x 27.5 | 100        |
| copper    | 12pt    | 270 | C80-MRC270CP2739 | 39.3 x 27.5 | 200        |
| emerald   | 12pt    | 270 | C80-MRC270GR2739 | 39.3 x 27.5 | 100        |
| gold      | 12pt    | 270 | C80-MRC270GL2739 | 39.3 x 27.5 | 200        |
| gunmetal  | 12pt    | 270 | C80-MRC270GM2739 | 39.3 x 27.5 | 200        |
| pink      | 12pt    | 270 | C80-MRC270PK2739 | 39.3 x 27.5 | 100        |
| purple    | 12pt    | 270 | C80-MRC270PU2739 | 39.3 x 27.5 | 100        |
| red       | 12pt    | 270 | C80-MRC270RE2739 | 39.3 x 27.5 | 100        |
| rose gold | 12pt    | 270 | C80-MRC270RG2739 | 39.3 x 27.5 | 100        |
| silver    | 13pt    | 300 | C80-MRC300SV2739 | 39.3 x 27.5 | 500        |
| silver    | 17pt    | 370 | C80-MRC370SV2739 | 39.3 x 27.5 | 300        |





# Mirri Sparkle

Glittering Metallic Papers

## Mirri Sparkle offers customers a distinctive glitter texture that sparkles in the light



The high-quality metallic film is laminated to a premium white-backed folding box-board. The surface of the film is treatable with print, as well as other print finishing options, from foil blocking to screen processes, enabling customers to create extremely attractive and unique options.

### Specifications

- ▶ Made in the UK
- ▶ High-quality film laminated to premium white backed folding box-board

### Press

- ▶ Digital
- ▶ Offset/Litho

### Finishing

- ▶ Foil Stamping

## Colours

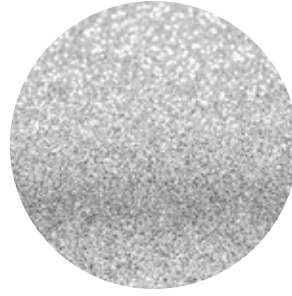
---



Black Diamond



Gold Touch



Silver

## Available Weights & Sizes

---

# Litho

| Stock         | Calpier | GSM |                  | Size        | Shts / Ctn |
|---------------|---------|-----|------------------|-------------|------------|
| Black Diamond | 16pt    | 280 | C80-MSP280BK3525 | 39.3 x 27.5 | 100        |
| Gold Touch    | 16pt    | 280 | C80-MSP280GL3525 | 35.4 x 25.2 | 100        |
|               |         |     | C80-MSP280GL3927 | 39.3 x 27.5 | 300        |
| Silver        | 16pt    | 280 | C80-MSP280SV3525 | 35.4 x 25.2 | 100        |
|               |         |     | C80-MSP280SV3927 | 39.3 x 27.5 | 300        |



# Sirio Pearl

Pearlescent Metallic Papers

## An affordable range of metallic papers with truly magical reflective power



Available in cover weights, Sirio Pearl is excellent for a variety of applications, including packaging, publications, labels, covers, brochures, stationery and announcements – wherever the need is to show a technical emphasis, a modern style and futuristic design.

### Certifications

---

- ▶ FSC®

### Specifications

---

- ▶ Made in Italy
- ▶ Acid-free
- ▶ Pearly Surface-one side
- ▶ Made with EFC pulp
- ▶ Light fast colours

### Press

---

- ▶ Offset/Litho

### Finishing

---

- ▶ Letterpress
- ▶ Hot Foil Stamping



## Colours

---



Aurum



Copperplate



Misty Rose



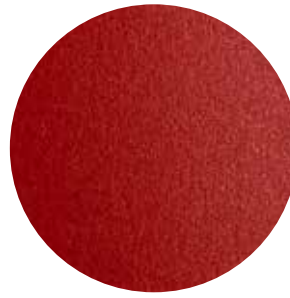
Oyster Shell



Platinum



Polar Dawn



Red Fever

## Available Weights & Sizes

---

# Litho

| Stock        | Calpier | GSM |                  | Size         | Shts / Ctn |
|--------------|---------|-----|------------------|--------------|------------|
| Aurum        | 14pt    | 300 | F06-SRP300AU2840 | 28.3 x 40.15 | 100        |
| Copperplate  | 14pt    | 300 | F06-SRP300CP2840 | 28.3 x 40.15 | 100        |
| Misty Rose   | 14pt    | 300 | F06-SRP300MR2840 | 28.3 x 40.15 | 100        |
| Oyster Shell | 14pt    | 300 | F06-SRP300YS2840 | 28.3 x 40.15 | 100        |
| Platinum     | 14pt    | 300 | F06-SRP300PL2840 | 28.3 x 40.15 | 100        |
| Polar Dawn   | 14pt    | 300 | F06-SRP300PD2840 | 28.3 x 40.15 | 100        |
| Red Fever    | 14pt    | 300 | F06-SRP300RE2840 | 28.3 x 40.15 | 100        |



huge

GIVENCHY

# Mirri Boards

Gold and Silver Metallic Specialty Papers

## Print short-run metallic effects with no special inks



Manufactured using an exceptionally high quality film, the brightness of the metalized surface provides a mirror finish which is further enhanced by the smoothness of the cast-coated board to which it is laminated. With the metalized surface protected by a polyester film, this construction has a high surface energy that offers an excellent key for inks and adhesives.

MirriBoard's bright, glossy finish lets you print short-run metallic effects with added dimension and value – without using special inks. You can print this stock with white ink to achieve a foil-stamped appearance and for extra special effects.

### Press

- ▶ Indigo

### Finishing

- ▶ Gluing
- ▶ Folding
- ▶ Die-cutting
- ▶ Embossing/debossing
- ▶ Laminating
- ▶ UV Coating

## Available Weights & Sizes

---

# Digital

| Weight |        | GSM | SKU         | Size        | Indigo | Toner | Pkg | / | Ctn |
|--------|--------|-----|-------------|-------------|--------|-------|-----|---|-----|
| 12pt   | gold   | 220 | HPBP12BSF-G | 19 x 13     | ✓      |       | 100 | / | 400 |
| 13pt   | silver | 220 | DLI4SF13PII | 19 x 13     | ✓      |       | 100 | / | 400 |
|        |        |     | HPBM12BSF   | 20.8 x 29.5 | ✓      |       | 100 | / | 300 |
| 16pt   | silver | 280 | HPBP16BSF   | 19 x 13     | ✓      |       | 100 | / | 300 |
| 18pt   | silver | 375 | DLI4SF18Pi  | 19 x 13     | ✓      |       | 100 | / | 300 |
|        |        |     | DLI4SF18Mii | 20.8 x 29.5 | ✓      |       | 100 | / | 200 |



huge

# Pearlescents

Luminescent Metallic Specialty Papers

## Gold and silver metallic papers with truly magical reflective power



GPA Pearlescent papers are perfect for high-end applications that evoke elegance and class including packaging, labels, brochures, stationery and announcements.

### Certifications

---

- ▶ FSC®
- ▶ Acid free

### Specifications

---

- ▶ Biodegradable
- ▶ Recyclable

### Press

---

- ▶ Digital
- ▶ Litho/Offset

### Finishing

---

- ▶ Folding
- ▶ Scoring
- ▶ Gluing
- ▶ Die-cutting
- ▶ Blind embossing
- ▶ Laminating
- ▶ Hot-foil stamping



## Available Weights & Sizes

# Digital

| Weight | Stock               | GSM | SKU         | Size          | Indigo | Toner | Pkg | / | Ctn   |
|--------|---------------------|-----|-------------|---------------|--------|-------|-----|---|-------|
| 80lbT  | champagne           | 125 | HPP80PCHMT  | 12 x 18       | ✓      | ✓     | 250 | / | 1,000 |
|        |                     |     | HPPP80CHMT  | 13 x 19       | ✓      | ✓     | 250 | / | 1,000 |
| 80lbT  | ice pearl           | 125 | HPP80PICT   | 12 x 18       | ✓      | ✓     | 250 | / | 1,000 |
|        |                     |     | HPPP80iCET  | 13 x 19       | ✓      | ✓     | 250 | / | 1,000 |
| 105lbC | cream pearl, 30%PCW | 284 | PDD105CPC   | 18 x 12       | ✓      | ✓     | 250 | / | 500   |
| 110lbC | ice pearl           | 300 | HPP110PCHM  | 18 x 12       | ✓      | ✓     | 200 | / | 400   |
|        |                     |     | HPP110PICE  | 18 x 12       | ✓      | ✓     | 200 | / | 400   |
|        |                     |     | HPPP110ICE  | 19 x 13       | ✓      | ✓     | 200 | / | 400   |
| 110lbC | silver pearl        | 300 | HPPM110ICE  | 20.8 x 29.5   | ✓      |       | 125 | / | 250   |
|        |                     |     | HPP110PSLV  | 18 x 12       | ✓      | ✓     | 200 | / | 400   |
| 110lbC | gold pearl          | 300 | HPP110PGLD  | 18 x 12       | ✓      | ✓     | 200 | / | 400   |
| 110lbC | crystal white pearl | 300 | HPPP110CST  | 19 x 13       | ✓      | ✓     | 200 | / | 400   |
| 130lbC | ice pearl           | 350 | HPPP130iCE  | 19 x 13       | ✓      | ✓     | 125 | / | 250   |
|        |                     |     | HPPM130iCE  | 20.82 x 29.52 | ✓      |       | 125 | / | 250   |
| 130lbC | crystal white pearl | 350 | HPPP130CST  | 19 x 13       | ✓      | ✓     | 125 | / | 250   |
| 130lbC | coal mine           | 350 | TDF130SPCMC | 19 x 13       | ✓      | ✓     | 125 | / | 250   |
| 130lbC | shiny blue          | 350 | TDF130SPSBC | 19 x 13       | ✓      | ✓     | 125 | / | 250   |



# Sirio Ultra Black

Smooth Satin Finish / 14pt / 16pt / 20pt / 30pt

## Sirio Ultra Black is the most unique and the most intense shade of “Black”



Machine-made and refined in Italy by Fedrigoni for incredible performance and application in several mediums; the innovative composition of the alpha-cellulose pulp without carbon black dyes prevents oxidation when hot foil processes are used, and also helps reduce scuff-ability.

Sirio Ultra Black is perfect for the most sophisticated packaging applications; takes embossing & de-bossing; suitable for offset printing, letterpress printing and serigraphy. Because of its intense coloration, it makes the perfect sheet for pastel artists that want a rich, deep and dense black.

This paper is neutral pH to ensure longevity regardless of the application. When the blackest “Black” in a paper is what is desired there can be no substitute for “UltraBlack”.

---

### Certifications

- ▶ FSC® C103192

---

### Specifications

- ▶ Made in Italy
- ▶ Acid-Free
- ▶ Neutral pH

---

### Press

- ▶ Litho/Offset

---

### Finishing

- ▶ Letterpress

## Applications

Sirio Ultra Black is specially designed for covers, inserts, tags, invitations, POS retail and prestigious packaging applications.



## Available Weights & Sizes

# Litho

| Stock             | Calpier | GSM |                  | Size        | Shts / Ctn |
|-------------------|---------|-----|------------------|-------------|------------|
| sirio ultra black | 14pt    | 280 | F06-SUB280BK2840 | 28.3 x 40.2 | 200        |
|                   | 16pt    | 370 | F06-SUB370BK2840 | 28.3 x 40.2 | 150        |
|                   | 20pt    | 460 | F06-SUB460BK2840 | 28.3 x 40.2 | 100        |
|                   | 30pt    | 680 | F06-SUB680BK2840 | 28.3 x 40.2 | 100        |



huge

# Color Uncoated

Red / Orange / Blue / Brown / Black

## Attention-grabbing papers that open up new avenues for creativity and design



Color Uncoated's deep, rich colour is ideal for white ink technology and seasonal, holiday and theme-type applications. They offer crisp image reproduction and a uniform surface for consistently beautiful results

### Press

---

▶ Digital



## Available Weights & Sizes

---

# Digital

| Weight | Stock           | GSM | SKU       | Size         | Indigo | Toner | Pkg | / | Ctn |
|--------|-----------------|-----|-----------|--------------|--------|-------|-----|---|-----|
| 110lbC | apple red       | 290 | HPP110APL | 18.25 x 12.5 | ✓      | ✓     | 100 | / | 400 |
| 110lbC | pumpkin orange  | 290 | HPP110PMK | 18.25 x 12.5 | ✓      | ✓     | 100 | / | 400 |
| 110lbC | navy blue       | 290 | HPP110NVY | 18.25 x 12.5 | ✓      | ✓     | 100 | / | 400 |
| 110lbC | chocolate brown | 290 | HPP110CHO | 18.25 x 12.5 | ✓      | ✓     | 100 | / | 400 |
| 100lbC | midnight black  | 270 | HPD100BLK | 18 x 12      | ✓      | ✓     | 125 | / | 500 |



# Translucent

Semi-Transparent Specialty Papers

**This naturally translucent paper offers unrivalled clarity and an elegant finishing touch**



Made with pristine cellulose fibres, these translucent papers offer brilliant clarity and post-press versatility. Translucent Papers are a popular choice for overlays, fly sheets and bellybands for applications ranging from invitations to corporate collateral, direct mail and more.

## Press

---

▶ Digital

## Available Weights & Sizes

---

# Digital

| Weight | Stock                                      | GSM | SKU         | Size        | Indigo | Toner | Pkg | / | Ctn   |
|--------|--|-----|-------------|-------------|--------|-------|-----|---|-------|
| 70#    | golden star k extra white translucent text | 100 | TDF70GSKEWT | 16.5 x 11.7 |        | ✓     | 250 | / | 500   |
| 80#    | translucent text                           | 112 | HPR80TPTDW  | 12.5 x 18.5 | ✓      | ✓     | 100 | / | 1,000 |



**the digital experts**

Papers / Plastics / Magnets